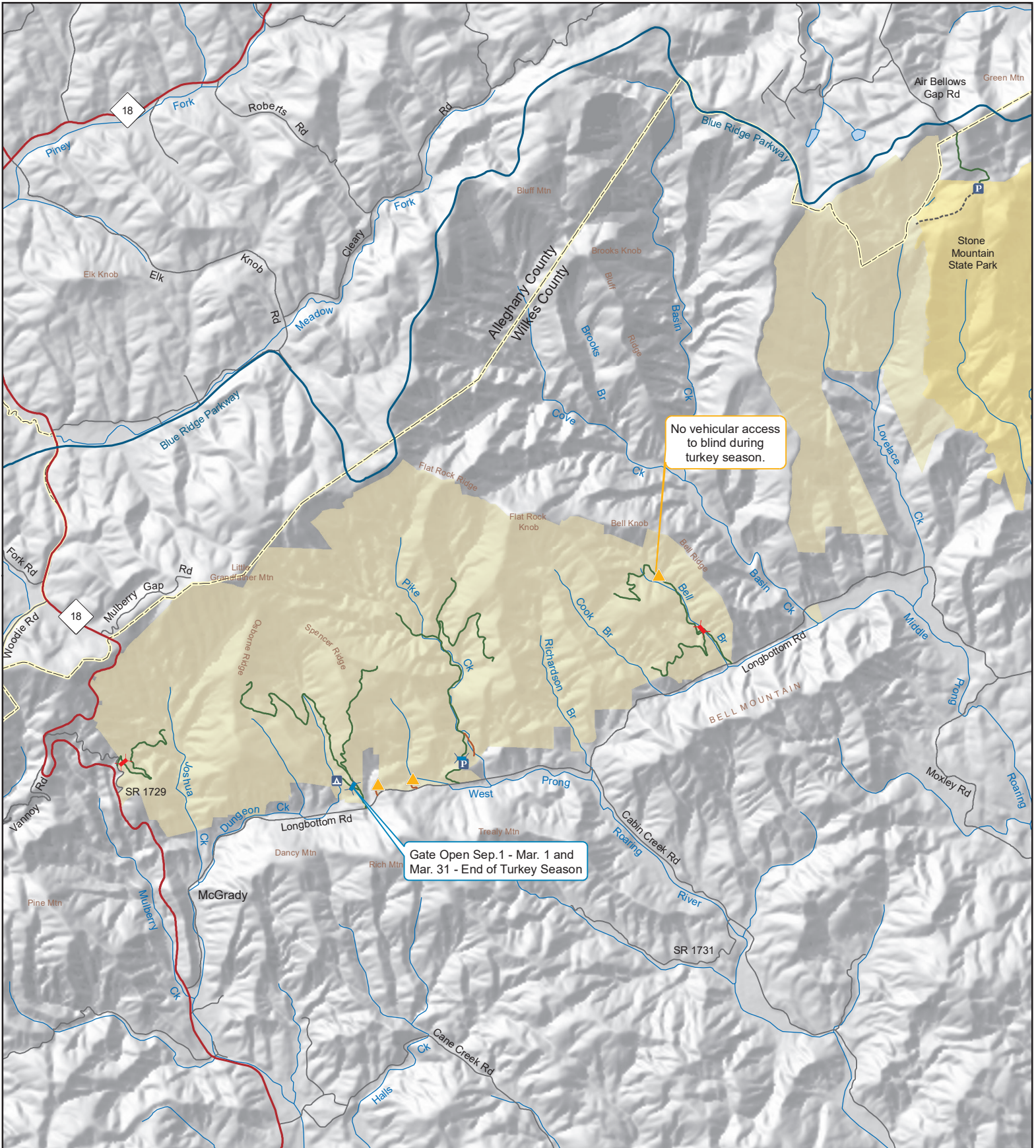


THURMOND CHATHAM GAME LAND

N.C. Wildlife Resources Commission
 Allegheny and Wilkes Counties (6,540 acres)



- Gate Open Sep. 1 - End of Turkey Season
- Gate Open Sep. 1 - Mar. 1
- Designated Camping Area

- Disabled Sportsman Blind
- Public Parking

- Hunter Vehicle Access Road
- Disabled Sportsman Access Road
- Trail
- Bear Management Area
- State Park

