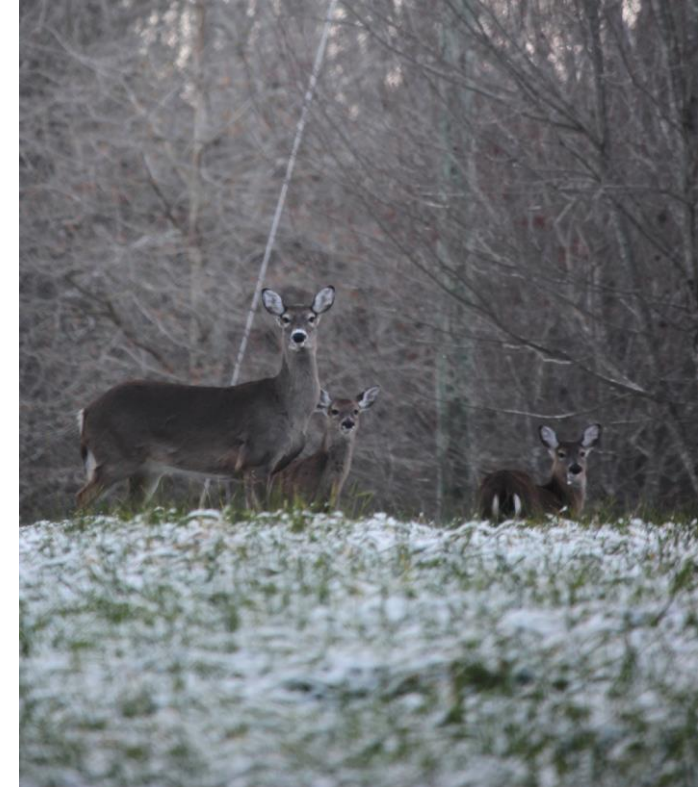


# NCWRC Deer Biological Objectives

## Objective

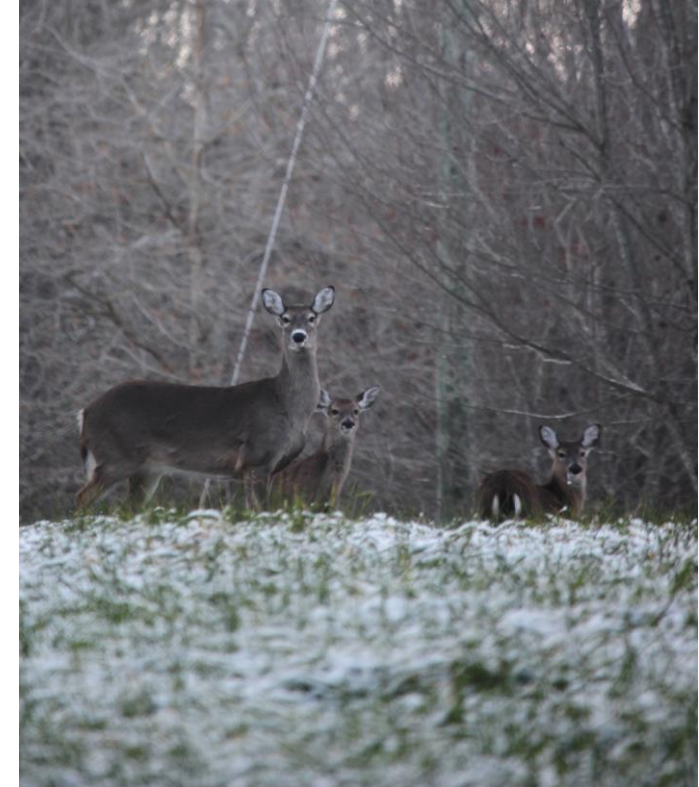
1. Sustained antlered buck harvest 1/mi<sup>2</sup>
2. Adult doe harvest comprised of 25-35% yearling does
3. Total antlered buck harvest comprised of 30% or less yearling bucks
4. At least 45% of harvest is does
5. At least 50% of harvest prior to rut is does
6. No more than 20% of antlered buck harvest before peak rut



# NCWRC Deer Biological Objectives

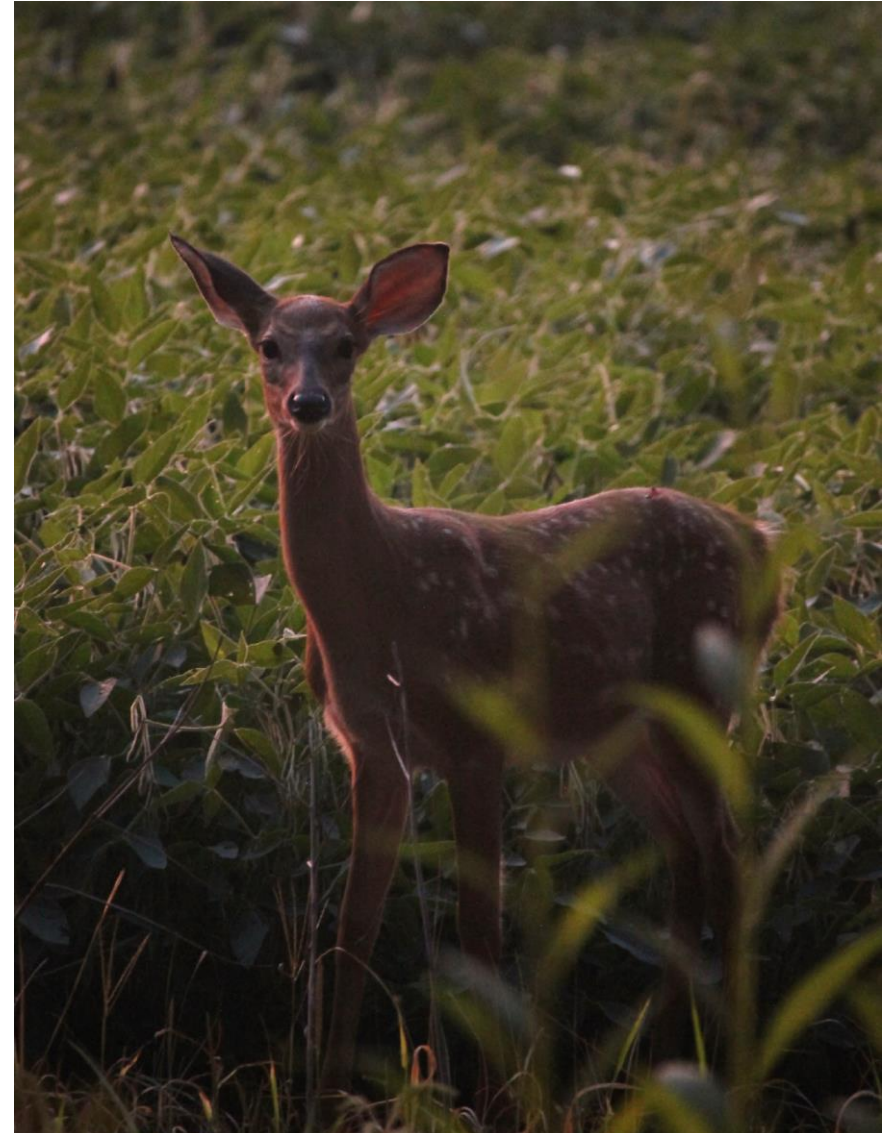
## Objective

1. Sustained antlered buck harvest 1/mi<sup>2</sup>
2. Adult doe harvest comprised of 25-35% yearling does
3. Total antlered buck harvest comprised of 30% or less yearling bucks
4. At least 45% of harvest is does
5. At least 50% of harvest prior to rut is does **=30%**
6. No more than 20% of antlered buck harvest before peak rut **=84%**



# Importance of Harvest Timing

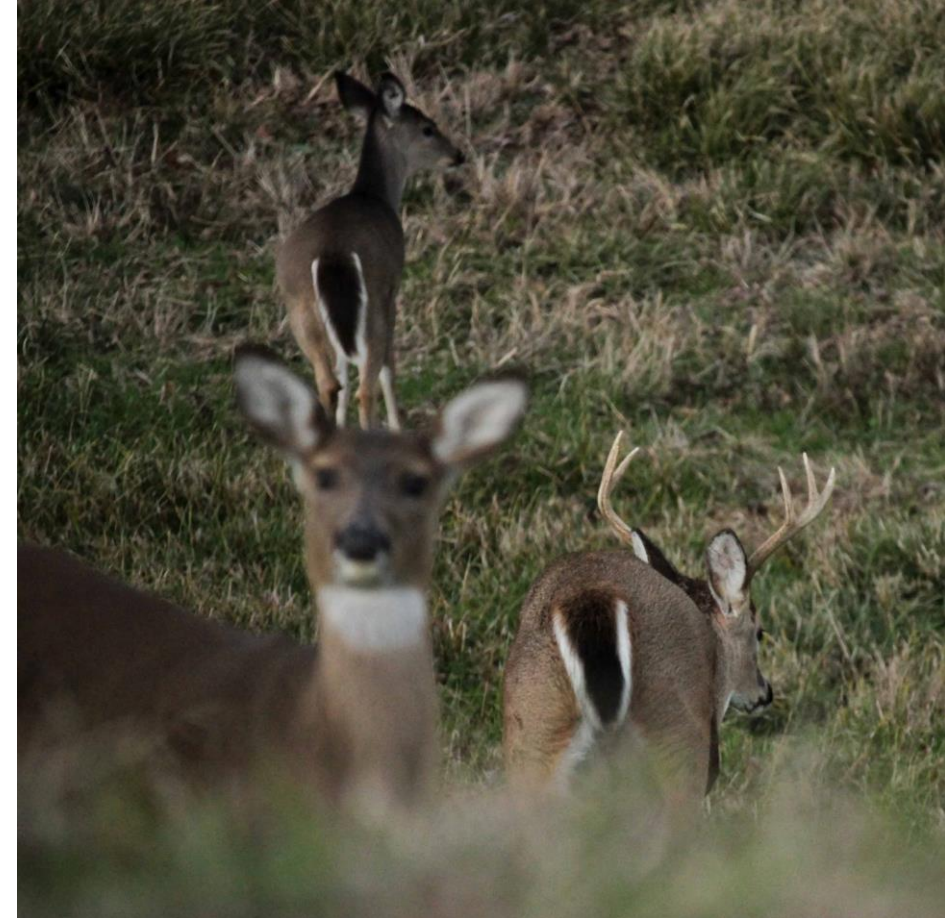
- ✘ Yearling buck dispersal largely protected
- ✘ Balanced sex ratio maintained during breeding
- ✘ Synchronized breeding and fawning





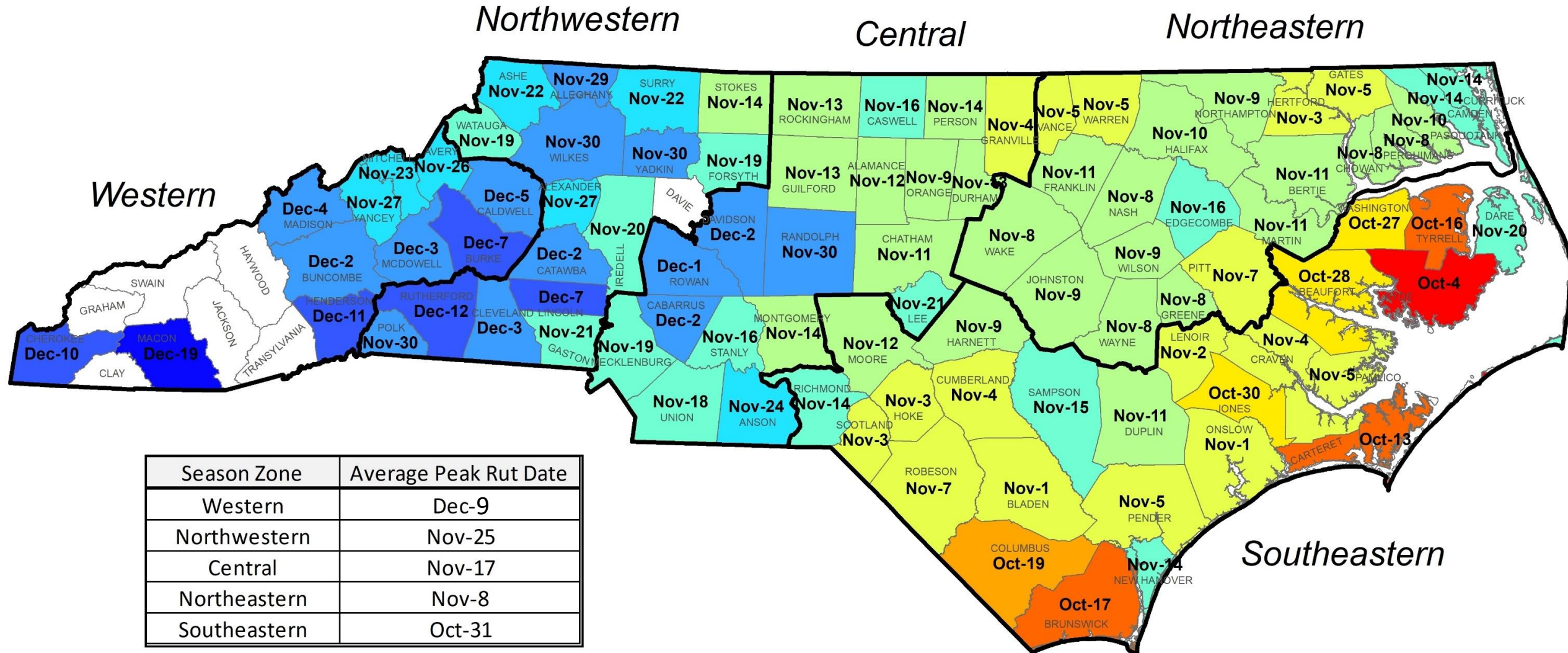
# Deer Reproduction

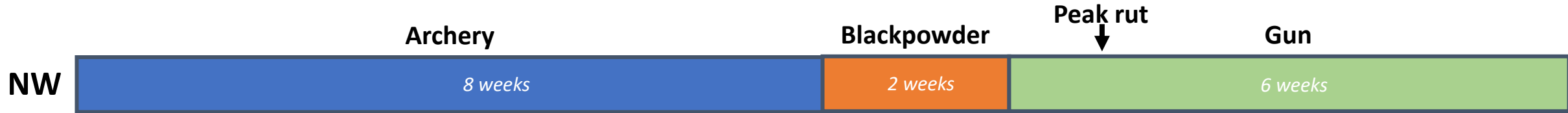
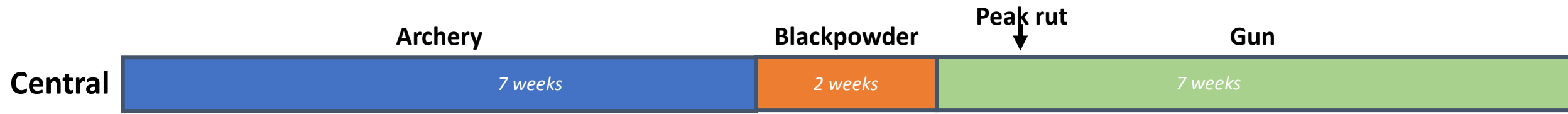
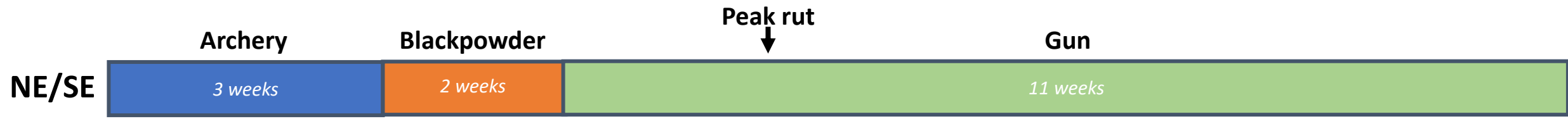
- ✘ Estrous cycle is regulated by day length
- ✘ Breeding takes place over several weeks
- ✘ Gestation is ~200 days; doe bred Dec. 9<sup>th</sup> will have fawn around June 26
- ✘ Breeding timing is important for fawn survival
- ✘ Rut timing can be estimated by measuring deer fetus size



# Estimated Peak Rut Dates

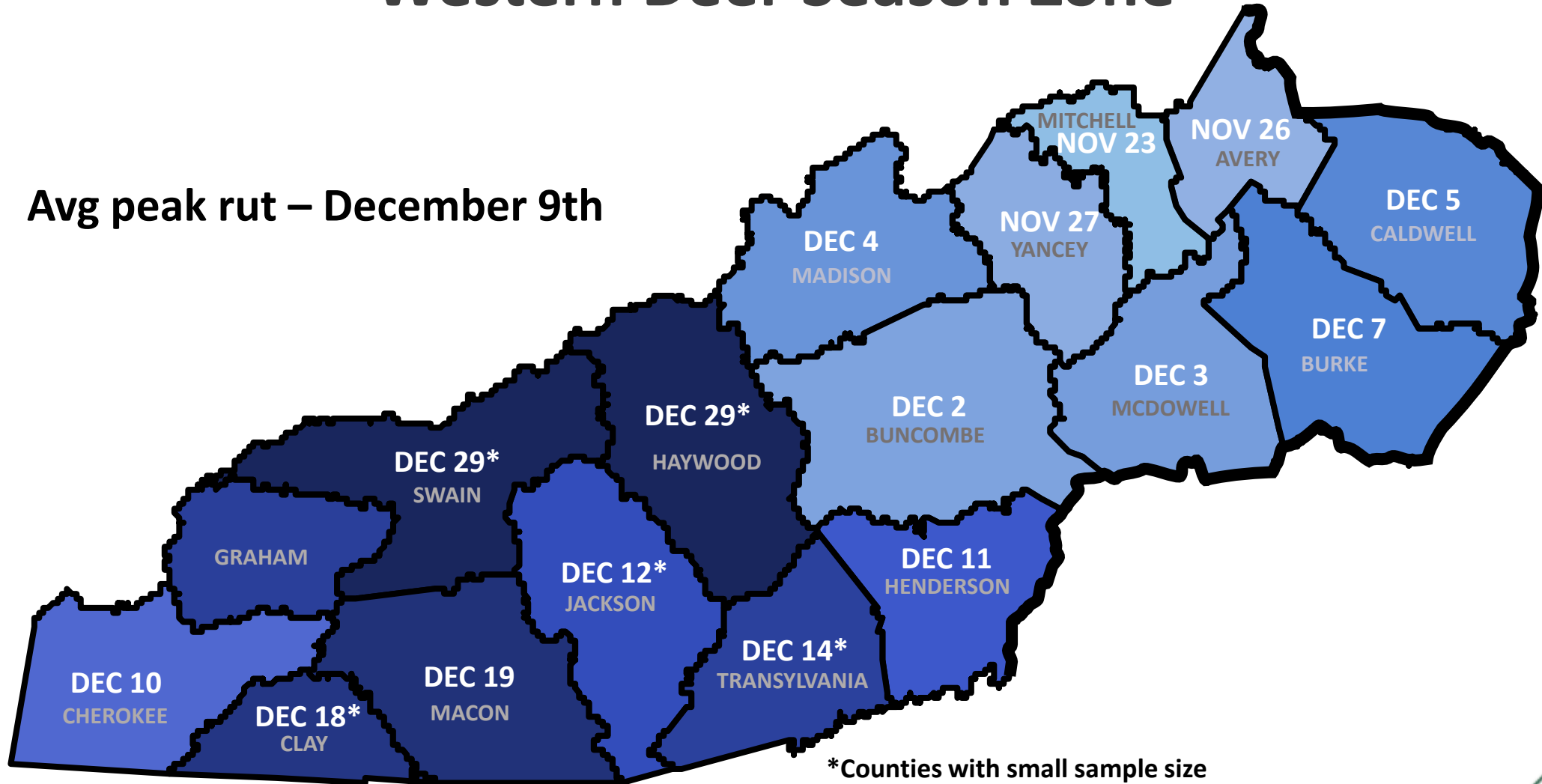
Updated 2022





# Western Deer Season Zone

Avg peak rut – December 9th



\*Counties with small sample size

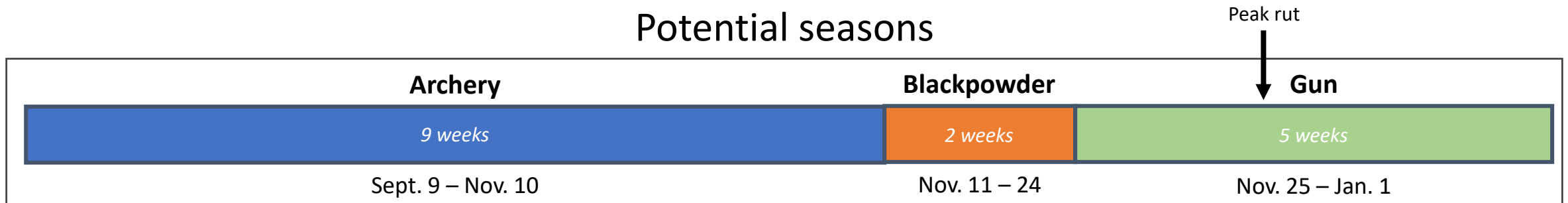


# 2024-25 Proposed Western Zone Seasons

## Current seasons



## Potential seasons



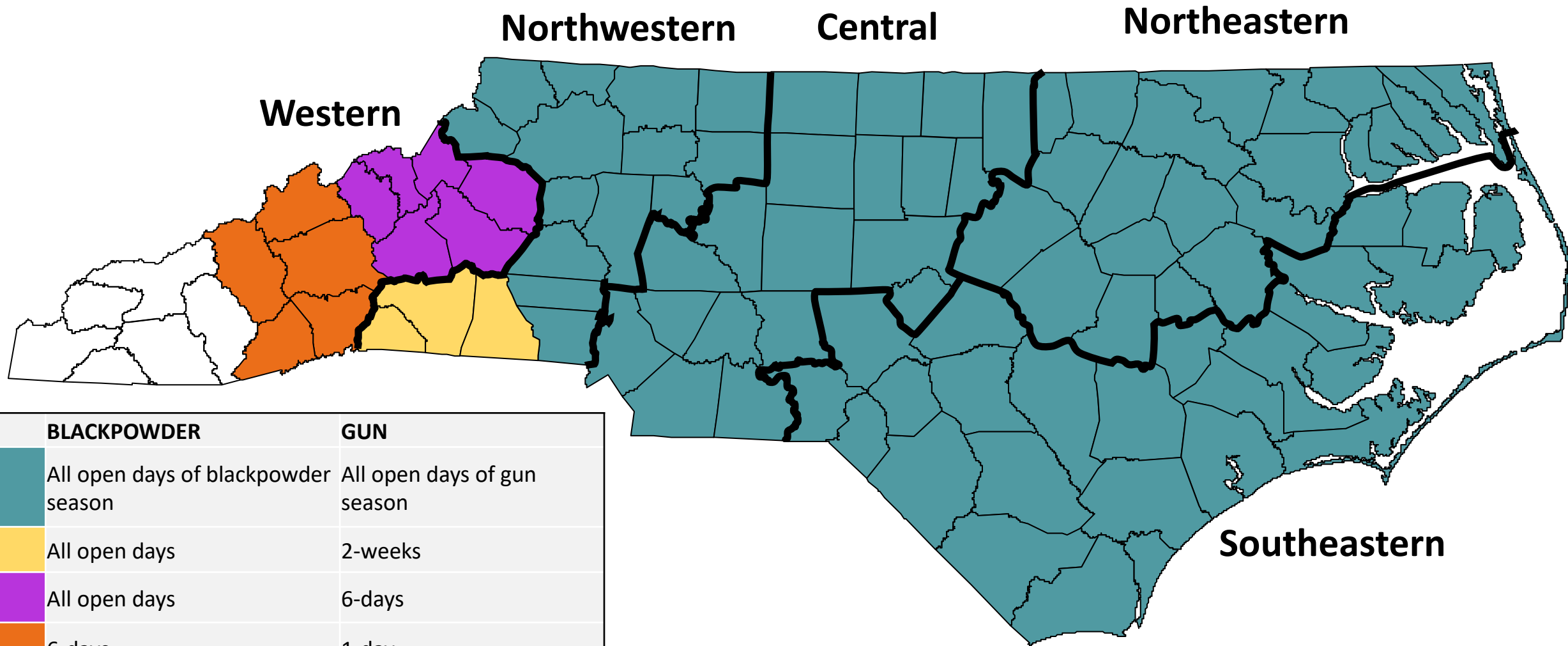


# Notable Impacts of Potential Changes



- Timing of harvest better aligned with breeding season
- Improved breeding season sex ratio
- Intensified rut activity
- Successful dispersal of yearling bucks on landscape
- Archery - shortened 2 weeks but gains 1 week of antlerless harvest opportunity
- Blackpowder – moved to cooler time of year with more deer activity
- Gun season - increased 2 weeks and overlapping the rut
- Thanksgiving would be blackpowder instead of gun
- Christmas and New Years would be gun

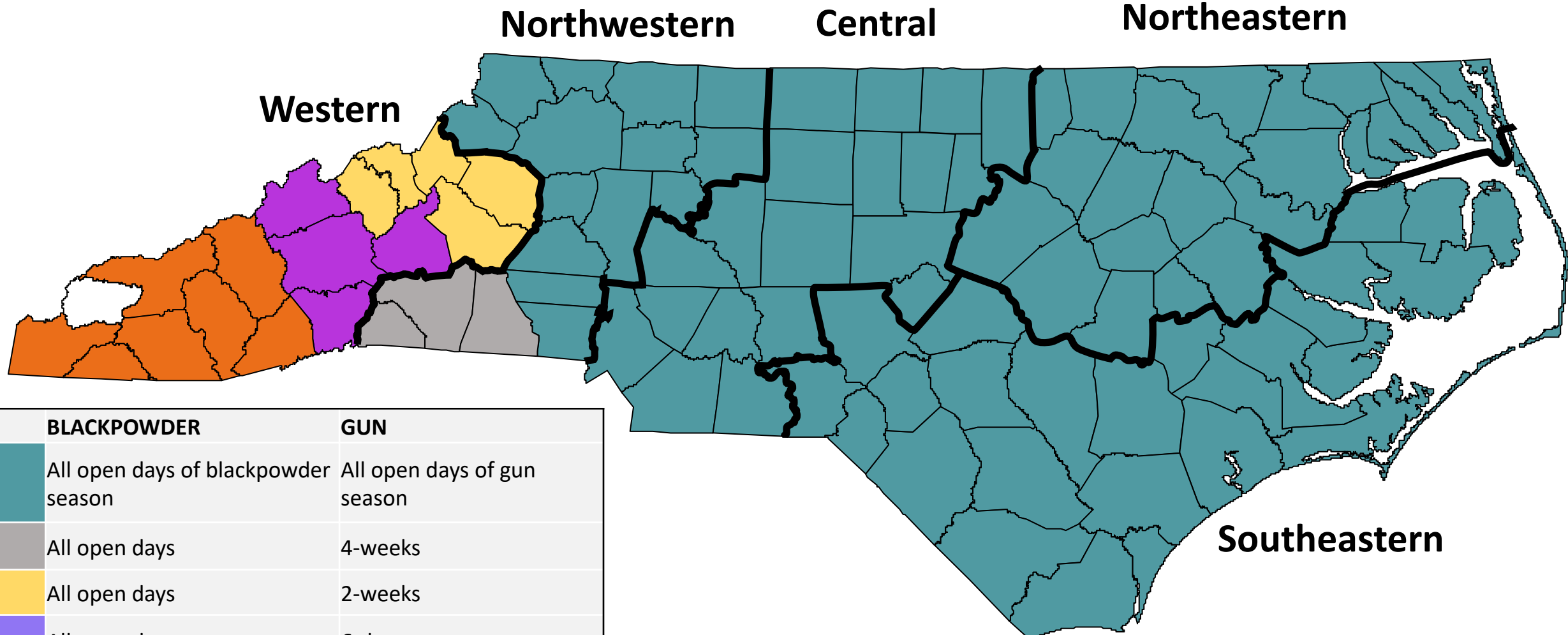
# 2022-23 Antlerless Deer Seasons



BLACKPOWDER		GUN	
Teal	All open days of blackpowder season	Teal	All open days of gun season
Yellow	All open days	Yellow	2-weeks
Purple	All open days	Purple	6-days
Orange	6-days	Orange	1-day
White	1-day	White	None



# Potential 2024-25 Antlerless Deer Seasons



BLACKPOWDER		GUN	
	All open days of blackpowder season		All open days of gun season
	All open days		4-weeks
	All open days		2-weeks
	All open days		6-days
	6-days		1-day
	1-day		None